



Christmas ornament 2018

www.roland-designs.com

This beautiful Christmas ornament is inspired by a small Bargello exercise from an antique spot sampler in my collection.

I adapted it by using Christmas reds and greens, and framed it with a border in crewel wool in Gobelin. The back side is worked in Gobelin and tent stitch.

The pattern is simple, and self-repetitive so you can make it any size or shape. I chose to stitch it on canvas, but the design can also be stitched without the wool border on linen or even weave cloth.

I hope you have fun with this little design, and stitch some beautiful heirloom ornaments.



©Virginie Lykins 2018

Free pattern

www.roland-designs.com

Instructions:

On 18 ct canvas use two strands of crewel wool, and a whole thread (6 strands) of embroidery cotton.

Begin by making the Gobelin border to your desired size, then fill with Bargello stitches starting in the middle. For a more pleasing aesthetic effect, do not center the pattern perfectly in the center.

Stitch two squares, trim to about 1 cm of the embroidery, fold with mitred corners. Sew the seams together with long armed cross stitch (also known as long legged cross stitch).

Stuff with polyester fill, or cotton and finish with a ribbon or twisted cord.



Crewel wool 993

DMC Cotton 3347

DMC Cotton 3345

DMC Cotton 934

DMC Cotton 814

DMC Cotton 304

DMC Cotton 666

You can replace the crewel wool with another color, or DMC 310 – Black.

Tips

This pattern can also be used for larger projects such as canvas bags, glasses case or decorative cushions.

The ornament can be finished with a longer loop and made into a scissor keep, or without it and used as a pin cushion.

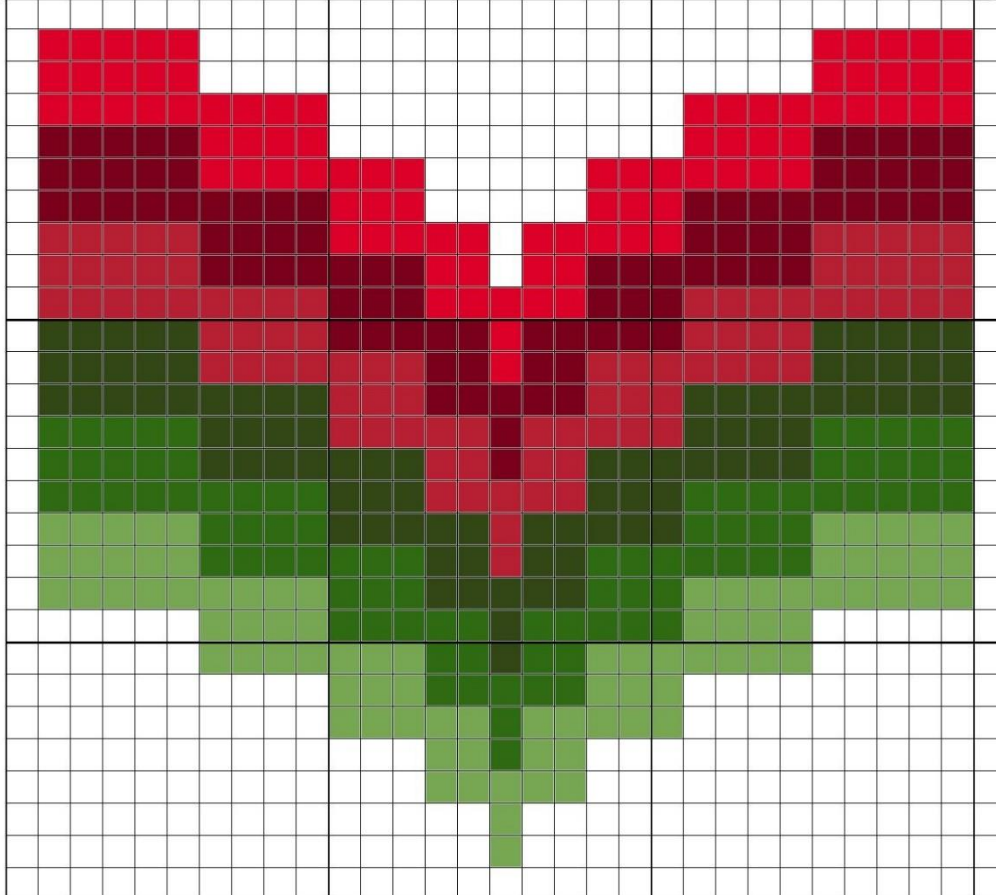
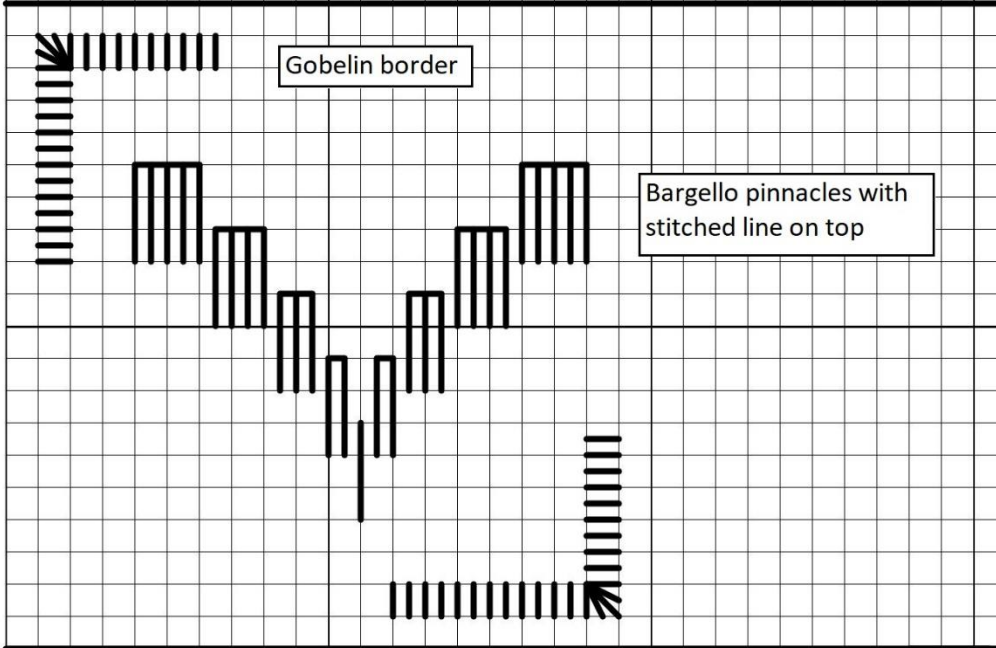
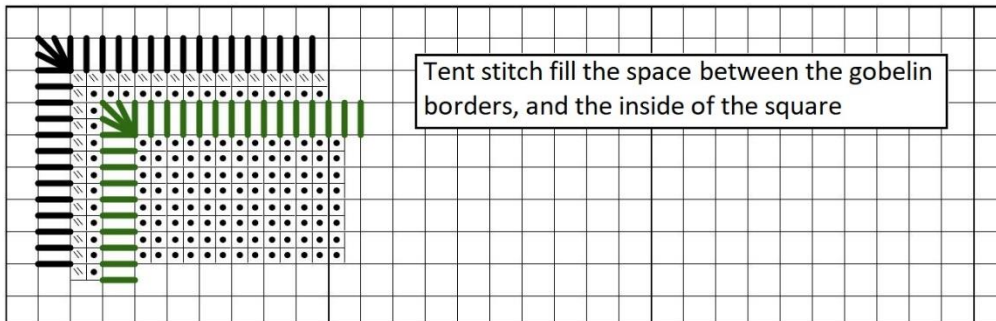


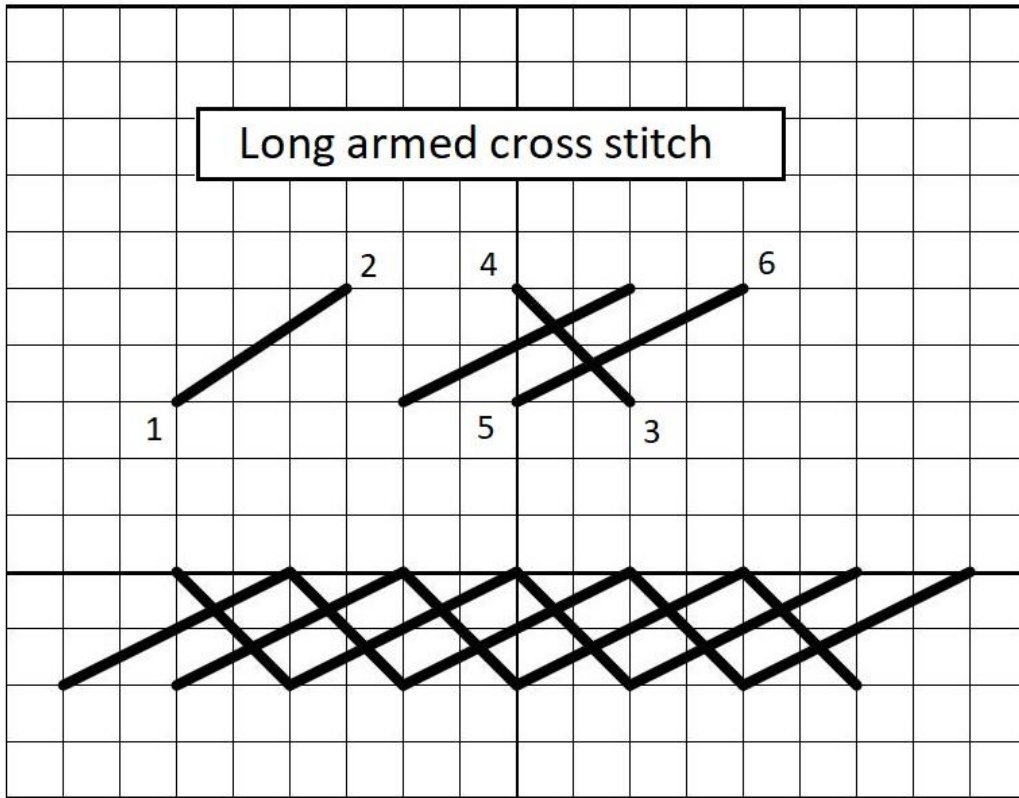
For more embroidery patterns, free charts, photos and a useful stitch calculator, be sure to visit our website:

www.roland-designs.com

This pattern is offered to you free of charge by Roland-designs.

Roland-designs retains all copyrights to the design, graphics and original photos.





Front of the ornament



Backside of the ornament