



# *Christmas ornaments*

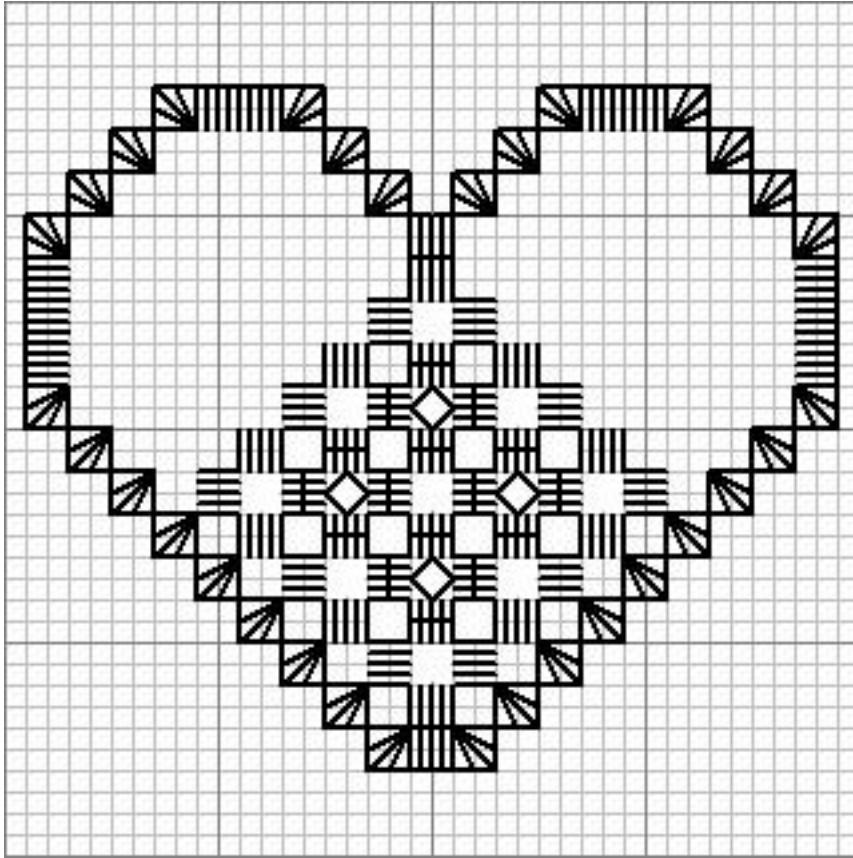
[www.roland-designs.com](http://www.roland-designs.com)

Two pretty hardanger ornaments designed by Laura Martin.

For perfect result stitch on 28 ct linen, use DMC perle cotton size 5 for the kloster blocks, and size 8 for the woven bars and other details. There are a lot of wonderful colored linens and perle cotton to choose from, so have fun experimenting.

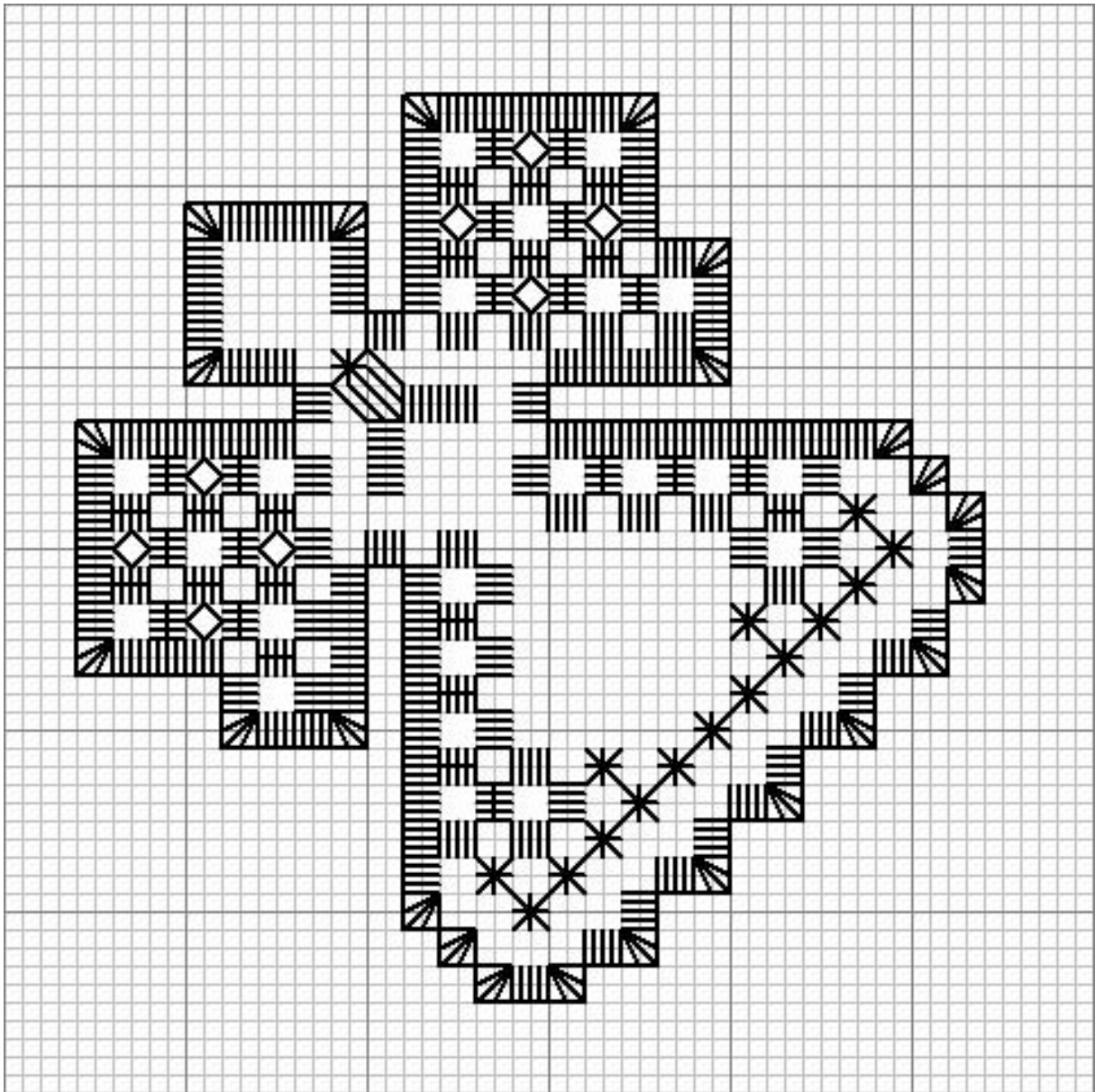
You can always add a cute ribbon, or beads to decorate your ornaments.





38 x 32 stitches  
2,9 x 3,4 inches on 28 ct



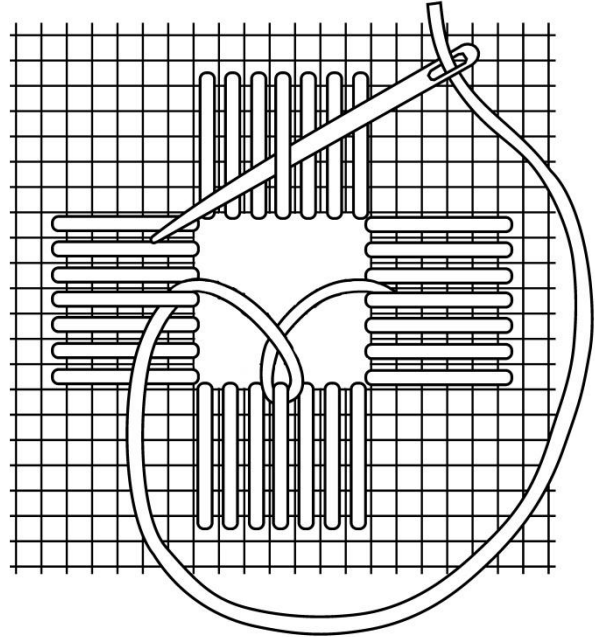
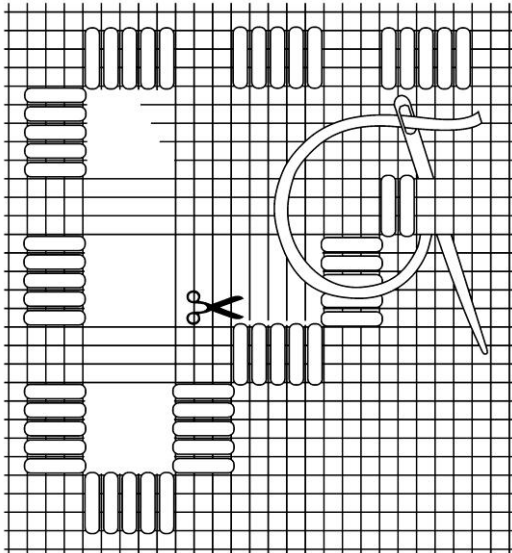


50 x 50 stitches

4,5 x 4,5 inches on 28 ct







## Hardanger basic stitches

Top left corner : Kloster blocks

Top right corner : Dove eye stitch

Bottom left corner : Woven bars

Bottom right corner : Button hole stitch

Be sure to take your time, count twice, and only cut the linen when you are finished with the whole embroidery.

